

# Profound IS – Geotechnical Monitoring System



## IS-Liquid Leveling System

real-time precision monitoring of settlements

### IS-liquid leveling system

The digital IS-liquid leveling system is an effective tool for precision monitoring of settlements. Typical application areas include monitoring of tunneling and excavation activities, as well as compensation grouting near structures.

For each project sensors need to be selected with the appropriate measuring range to ensure accurate settlement measurements: the elevation differences need to be within range, even after the expected settlements. During installation the sensors are interconnected by means of a pressure line, an air compensation line and a digital IS-data cable.

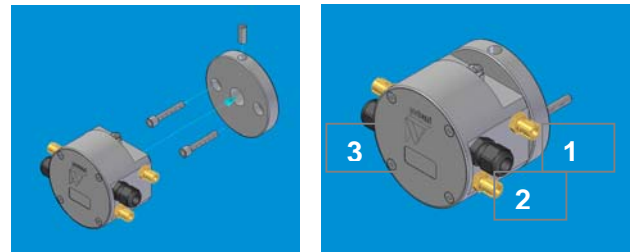
The elevation changes of the individual sensors in the system are then derived from the liquid pressure. This is done by comparing the liquid pressure at each sensor with the pressure at the reference sensor.

The system responds immediately to settlements, as there is no liquid flow between the sensors. The sensor also directly digitizes the measurement data and performs an automatic temperature compensation.

As the fully digital system is equipped with a GSM-link, you can retrieve the data from your office PC at any time. You can quickly process, export and graphically display the measurement results on a Windows PC.

### Technical specifications

Measuring ranges	50 mbar, other ranges on request
Linearity	≤ 0.1 % (tested)
Monitoring accuracy	± 0.01 inch (range dependent)
Supply voltage	7 up to 15 Volt
Measurement	24 bit A/D-conversion
Temperature range	+14°F to +122°F (liquid dependent)
Material mounting plate	Stainless steel
Material housing	Thermoplastic material (POM)
Material pressure lines	LDPE or PVC
Digital data cable	4-core cable (4 x AWG 16)
Liquid tubing	6 mm (inner); 9 mm (outer)
Air tubing	4 mm (inner); 6 mm (outer)
Network hardware	CAN (digital)
Sensor size (w x h x d)	4.75 x 3.5 x 3.0 inches
Sensor weight	1 lb
Mounting plate size	Ø 3.55 inch, 0.6 inch
Mounting plate weight	1.5 lbs



[1] = Pressure line (filled with liquid)

[2] = Barometric pressure compensation

[3] = Digital IS-data cable



### Profound BV (head office)

P.O. Box 469  
2740 AL Waddinxveen  
The Netherlands  
Tel. + 31 182 - 640 964  
info@profound.nl  
www.profound.nl

### VMS-Profound

1411 Cumberland Rd  
Tyler, TX 75703  
Tel: 903 216 0038

vms-profound@verbeekservices.com  
www.profound-usa.com

02/2008